

SEMI4: Semantic Interoperability for Integration of clinical Information and Indicators

- Promovenditag KIK 2011 -

Kathrin Dentler

March 31, 2011

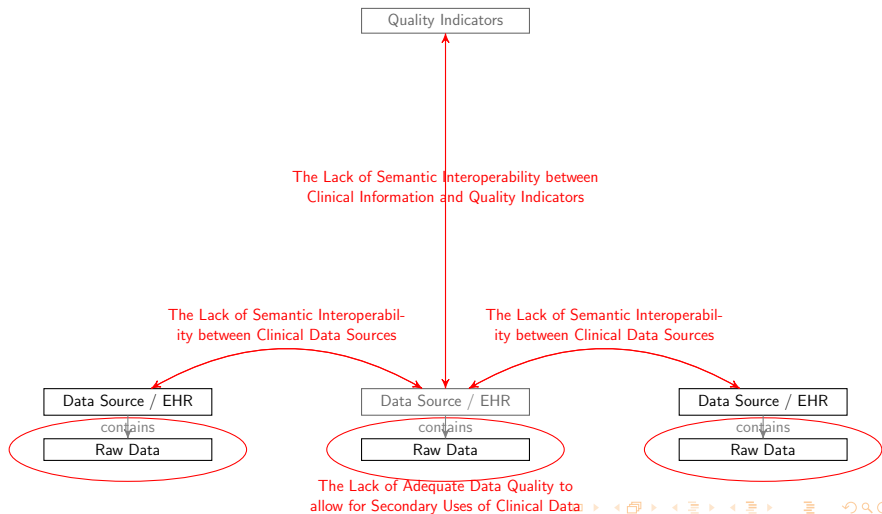
Outline

- 1 Overview PhD Research
- 2 Relation to Clinical Trials / Guidelines
- 3 Discussion

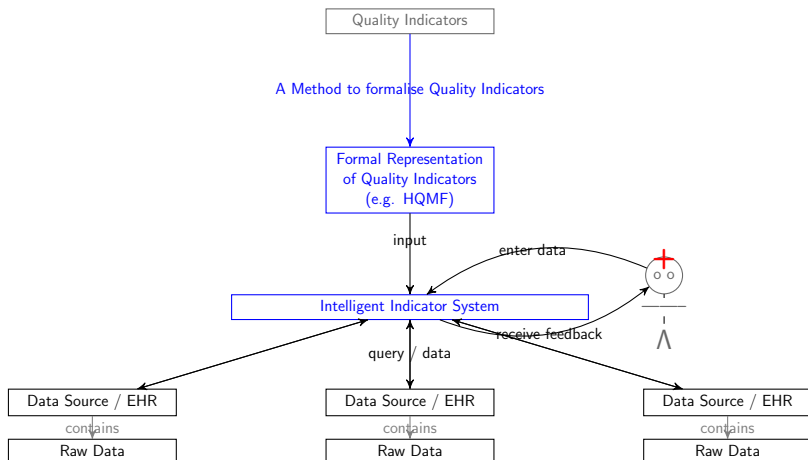
Outline

- 1 Overview PhD Research
- 2 Relation to Clinical Trials / Guidelines
- 3 Discussion

Problems



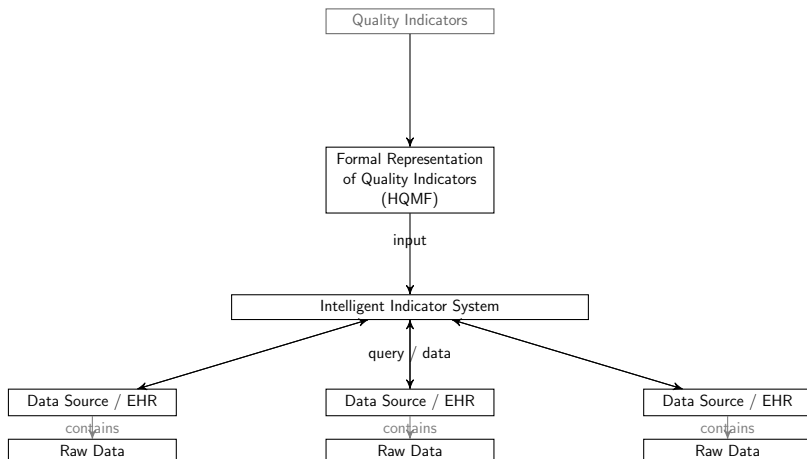
Approach



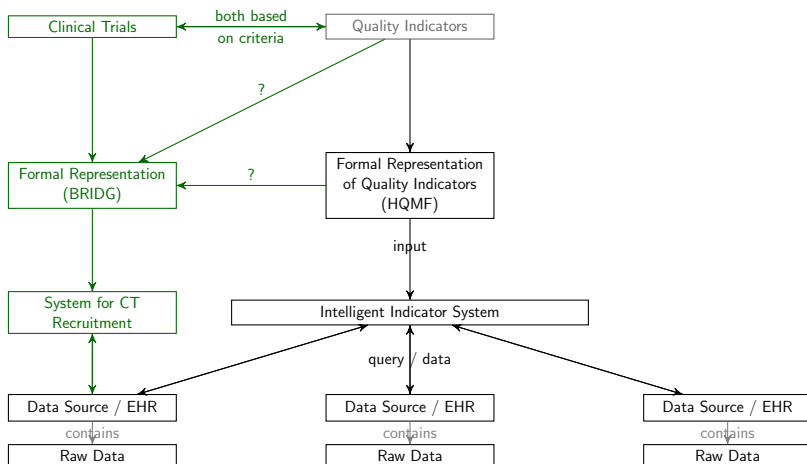
Outline

- 1 Overview PhD Research
- 2 Relation to Clinical Trials / Guidelines
- 3 Discussion

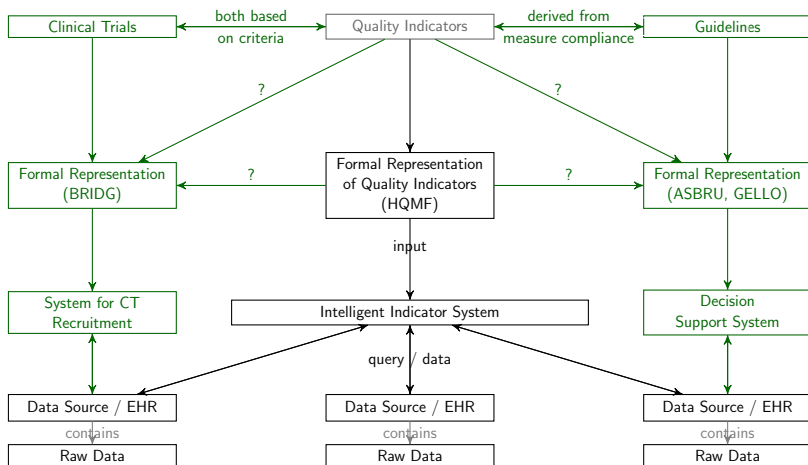
Relation to Clinical Trials / Guidelines



Relation to Clinical Trials / Guidelines



Relation to Clinical Trials / Guidelines



Relation to Clinical Trials / Guidelines

Commonalities & Differences

Commonalities

- AND / OR connected inclusion and exclusion criteria
- All are based on clinical data

Differences

- Clinical trials recruiting is prospective
- Quality indicator calculation is retrospective
- Decision Support is in real-time

Examples related to the GIOCA

Guideline: Minimum number of lymph-nodes to assess stadium.

Recommendation:

In order to assess a patient's lymph-node status, as many lymph-nodes as possible have to be examined with the help of conventional techniques. A minimum of 10 lymph-nodes is recommended to assess a negative lymph-node status.

Examples related to the GIOCA

Quality Indicator: Number of examined lymph-nodes after resection.

Nominator: Number of patients who had 10 or more lymph-nodes examined after a resection of a primary colon carcinoma.

Denominator: Number of patients who had lymph-nodes examined after a resection of a primary colon carcinoma.

Exclusion Criteria: Patients with previous radiotherapy, recurrent colon carcinoma.

Examples related to the GIOCA

Clinical Trial: Colon Cancer Prognosis After Radical Surgery

Purpose: Radical surgery is supposed to improve prognosis of colon cancer. (Surrogate measure of achievement is the number of lymph nodes removed.)

Inclusion Criteria:

- * Malignant tumor (adenocarcinoma) of the large intestine (colon)
- * Willingness to participate

Exclusion Criteria:

- * No radical resection (R0) possible
- * Unwilling to participate or medically unfit to undergo follow-up

Outline

- 1 Overview PhD Research
- 2 Relation to Clinical Trials / Guidelines
- 3 Discussion

Discussion

What are your experiences /
comments / ideas?

Kathrin Dentler
k.dentler@amc.uva.nl
k.dentler@few.vu.nl